



COMPANY PROFILE



1999

Established first factory over **75,000 SQFT**



2006

Expanded product portfolio: PVC resin, PVC doors, and PVC ceiling panels



2010

Opened second factory more than **322,000 SQFT**



2013

Launched a new product line PVC Skrinkable Film



2014

Launched a new product PVC Profiles



2017

Developed **OEM building materials product** for export markets



2019

Expanded export portfolio with **vinyl flooring products**



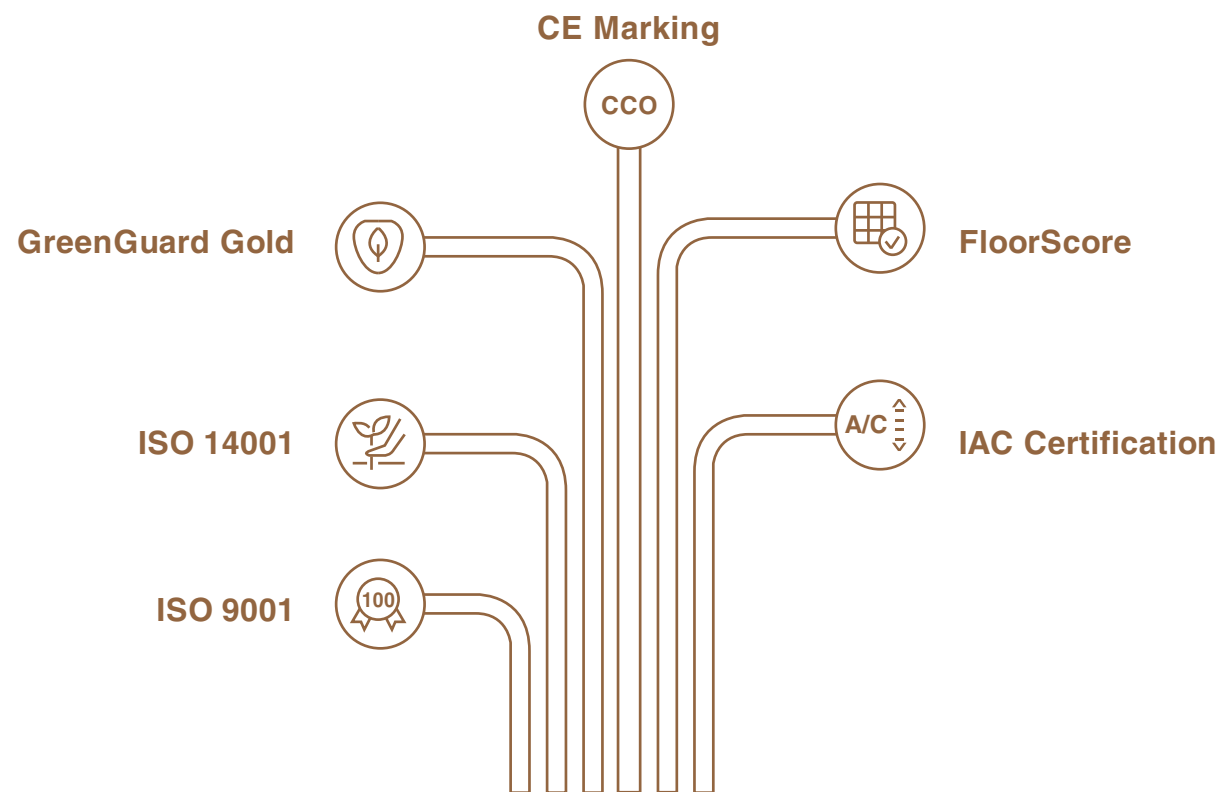
TÍN AN – OVER 26 YEARS OF MANUFACTURING & EXPORTING, CONTINUOUSLY INNOVATING AND REACHING NEW HEIGHTS

Founded in 1999, Tin An has spent more than 26 years relentlessly improving and expanding, proudly standing as one of Vietnam’s leading importers of plastic raw materials and exporters of high-quality building materials. Over the decades, we have steadily built a solid reputation in the global marketplace.

Our state-of-the-art manufacturing complex spans over 1,000,000 SQFT in a strategic location, meticulously designed and constructed to meet modern industrial standards. Equipped with highly automated production lines, the facility integrates dedicated zones – including the main production area, a R&D center and quality control department, ISO-certified testing laboratories, and international-standard warehousing. With a monthly output of more than 500 containers – equivalent to millions of square meters of SPC, WPC, and diverse PVC products – Tin An is strategically positioned to serve customers worldwide.

The Foundation of Our Sustainable Growth & Market Leadership:

We believe that lasting success begins with solid core values. At Tin An, this means a harmonious blend of innovative thinking, operational excellence, unwavering commitment to quality, and ethical business practices. These principles have shaped our corporate culture and continue to drive us forward – enabling us to grow within Vietnam while expanding confidently into global markets.



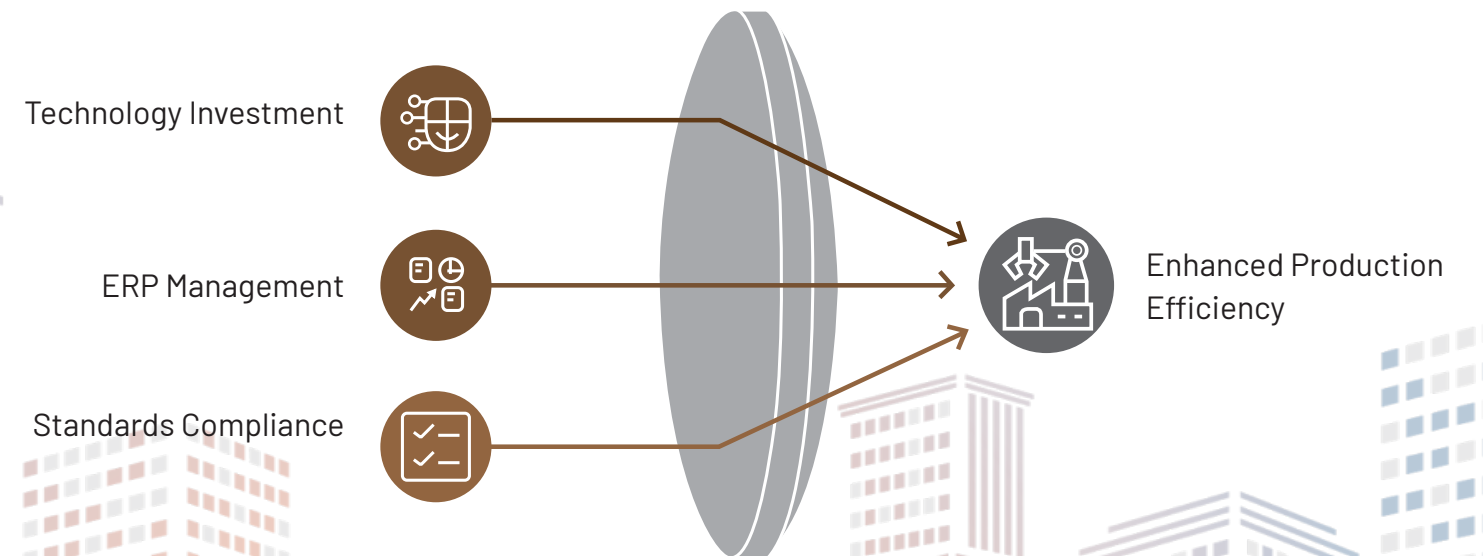


➤ INTRODUCTION

Manufacturing Excellence – The Foundation for Sustainable Partnerships:

We confidently handle large-scale export and OEM orders that demand high technical specifications and stringent quality standards from international partners. **Our commitment includes precise delivery timelines, consistent product quality, and cost efficiency.**

Every step of the process – **from raw material inspection, extrusion, UV coating, CNC machining, profiling, pressing, printing, to final packaging** – is driven by automation and governed by a comprehensive quality management system, reinforced with stringent in-house standards. This end-to-end control enables Tin An to maintain high efficiency, adapt swiftly to market fluctuations, and **earn the enduring trust of global partners.**





ON-SITE



WAREHOUSE



LAB ROOM



ON-SITE





FINISHED GOODS WAREHOUSE - LOADING AREA



INSPECTION AREA



RAW MATERIALS WAREHOUSE



CERTIFICATES

CERTIFICATE OF COMPLIANCE

TIN AN INVESTMENT PRODUCTION TRADING JOINT STOCK COMPANY
SPC Flooring (3-8mm) with 1mm underlayment

202166-430
Certificate Number

23 Dec 2020 - 23 Dec 2025
Certificate Period

Certified
Status

UL GREENGUARD GOLD

UL 285B - 2021 Gold Standard for Chemical Emissions for Building Materials, Finishes and Furnishings

Fluorescing products are determined compliant in accordance with California Department of Public Health (CDPH) Standard Method (1) in a way using an Office and Classroom Environment Product Method in accordance with UL's test method to show compliance to emissions limits set in UL 285B, Section 3 and 4.

TEST REPORT

eurofins

TIN AN INVESTMENT PRODUCTION TRADING JOINT STOCK COMPANY
LOT B1, 03 STREET, DONG AN 2 INDUSTRIAL PARK, BINH DUONG WARD, HO CHI MINH CITY, VIETNAM

TESTED SAMPLE DESCRIPTION: SPC FLOORING
TESTED STYLE / ITEM NO.: NA
Eurofins Vietnam Reference Number: EFT23M4028-CG-01
CLIENT: TIN AN J.S.C.
COUNTRY OF ORIGIN: VIETNAM
COUNTRY OF DESTINATION: US, EU
SAMPLE RECEIVED DATE: JUN. 04, 2023
TEST PERIOD: JUN. 04, 2023 TO JUN. 11, 2023

TEST(S) REQUESTED BY APPLICANT: Specifications Indoor Air Comfort and Indoor Air Comfort Gold V9.0 Annex 1: A.2 Resident Floors.

RESULT: PLEASE REFER TO PAGE 2-6

FOR FURTHER DETAILS, PLEASE REFER TO THE FOLLOWING PAGES:
SIGNED FOR AND ON BEHALF OF EUROFINS TESTING TECHNOLOGY (SHENZHEN) CO., LTD.

James Luo Senior VQO Testing Engineer
Jack Senior Operations Manager



CERTIFICATES

TIN AN JSC

Indoor Air Quality Certified to SCS-105 Version 4.2 - 2023

Conforms to the COPMHELE Standard Method v1.2-2017 (California Section 01350), effective April 1, 2017, for the school classroom and private office parameters when modeled as Flooring.

Measured Concentration of Total Volatile Organic Compounds (TVOC): Less than equal to 0.9 mg/m³ in compliance with COPMHELE Standard Method v1.2-2017.

Registration # SCS-FS-09972
Valid from: June 01, 2025 to May 31, 2026

SCS Global Services is currently the only certification body approved by the President Floor Covering Institute (PFCI) to provide FloorScore® product certification. Certified products are only listed on the SCS Green Products Guide. <http://www.scsglobal.com> can confirm green products guide.

floor score
ANAB ACCREDITED

SCS global SERVICES

Certificate

Standard: ISO 9001:2015 and ISO 14001:2015
Certificate Register No.: 01 100 2039006 and 01 104 2039006

Certificate Holder: **tinan**
TIN AN INVESTMENT PRODUCTION TRADING JOINT STOCK COMPANY
Lot B1, Street 03, Dong An 2 Industrial Park, Hoa Phu Ward, Thu Dau Mot City, Binh Duong Province, Vietnam

Scope: Manufacture of plastic doors, aluminium doors, plastic flooring and ceiling panels, Installation of plastic doors and aluminium doors, Processing of civil and industrial plastic products.

Validity: The certificate is valid from 03.08.2020 until 02.08.2023. First certification 2020

03.08.2020

IAF, DAKKS, TÜVRheinland

VERIFICATION OF CONFORMITY

SGS

It has been stated that the construction product **VINYL TILE FLOORING** (Thickness: 3-8mm, Mass per unit area: 2000g/m² - 2000g/m², Type: SPC Flooring 0001) (EN 14683 Product Material: PVC 35 - 35 %, CaCO₃ 59 - 75 %, Additives 2 - 3 %) intended use: Floor coverings for use in building sector system 3

issued on the behalf by **TIN AN INVESTMENT PRODUCTION TRADING JOINT STOCK COMPANY** LOT B1, 03 STREET, DONG AN 2 INDUSTRIAL PARK, BINH DUONG WARD, HO CHI MINH CITY, VIETNAM and produced in the manufacturing plant by **TIEN PHONG PRODUCTION - TRADING - INVESTMENT COMPANY LIMITED** PART OF LOT B1, 03, ROAD 03, DONG AN 2 INDUSTRIAL PARK, HOA PHU WARD, THU DAU MOT CITY, BINH DUONG PROVINCE

This certificate is customer voluntary and refers to the tested samples only type representative of the tested product. The manufacturer is obligated to verify factory production control.

This statement is valid from Sep.22, 2025 until Feb.11, 2026 and remains valid as long as the manufacturing conditions in the plant or the factory production control itself are not modified significantly.

Issue 1, Validated since Sep.22, 2025
Authorized by *jesamjin*

Jesse Jin
Senior Manager
SGS-CSTC Standards Technical Services Co., Ltd.
19F Century Tower, Nanjing Road, Pudong District, Shanghai, China 200142
www.sgs.com | www.cstc.com.cn | www.sgs.com.cn

SGS

VERIFICATION OF CONFORMITY

SGS

It has been stated that the construction product **VINYL TILE FLOORING** (Thickness: 3-8mm, Mass per unit area: 2000g/m² - 2000g/m², Type: SPC Flooring 0001) (EN 14683 Product Material: PVC 33 - 36 %, CaCO₃ 57 - 61 %, Additives 4 - 10 %) intended use: Floor coverings for use in building sector system 3

issued on the behalf by **TIN AN INVESTMENT PRODUCTION TRADING JOINT STOCK COMPANY** LOT B1, 03 STREET, DONG AN 2 INDUSTRIAL PARK, BINH DUONG WARD, HO CHI MINH CITY, VIETNAM and produced in the manufacturing plant by **TIEN PHONG PRODUCTION - TRADING - INVESTMENT COMPANY LIMITED** PART OF LOT B1, 03, ROAD 03, DONG AN 2 INDUSTRIAL PARK, HOA PHU WARD, THU DAU MOT CITY, BINH DUONG PROVINCE

This certificate is customer voluntary and refers to the tested samples only type representative of the tested product. The manufacturer is obligated to verify factory production control.

This statement is valid from Sep.22, 2025 until Feb.11, 2026 and remains valid as long as the manufacturing conditions in the plant or the factory production control itself are not modified significantly.

Issue 1, Validated since Sep.22, 2025
Authorized by *jesamjin*

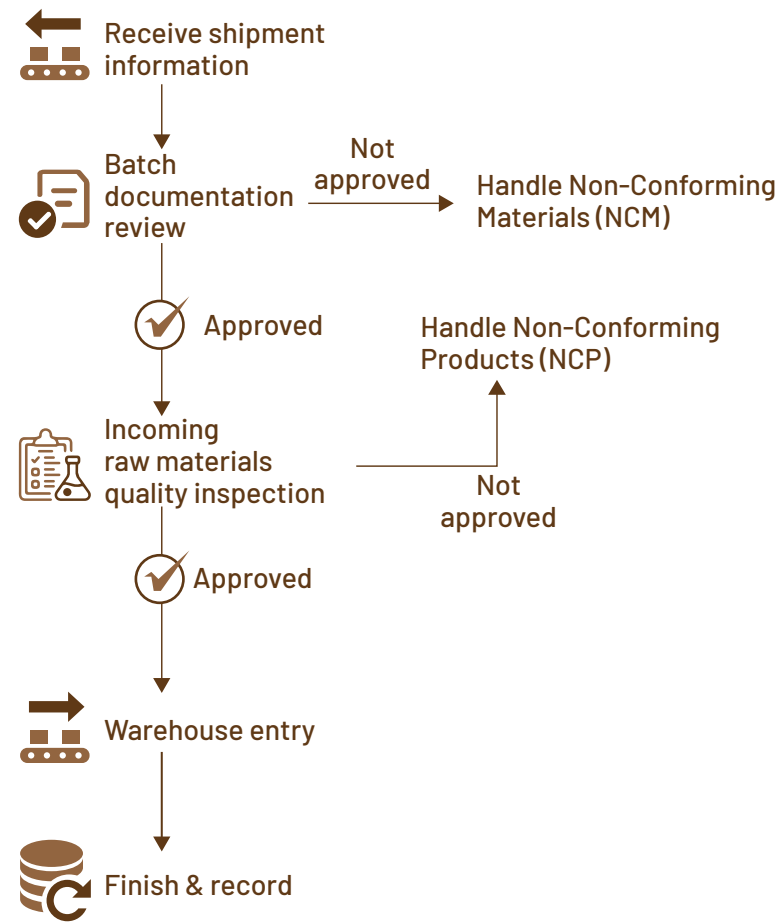
Jesse Jin
Senior Manager
SGS-CSTC Standards Technical Services Co., Ltd.
19F Century Tower, Nanjing Road, Pudong District, Shanghai, China 200142
www.sgs.com | www.cstc.com.cn | www.sgs.com.cn

SGS

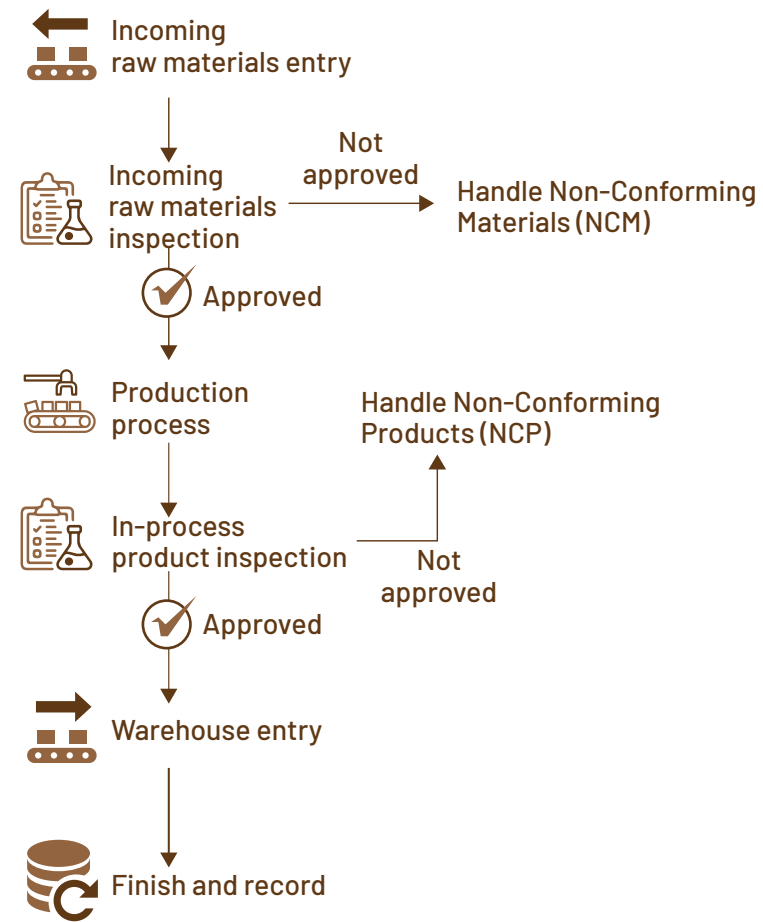


QUALITY CONTROL SYSTEM

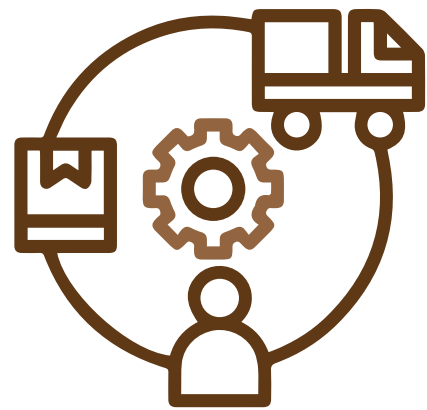
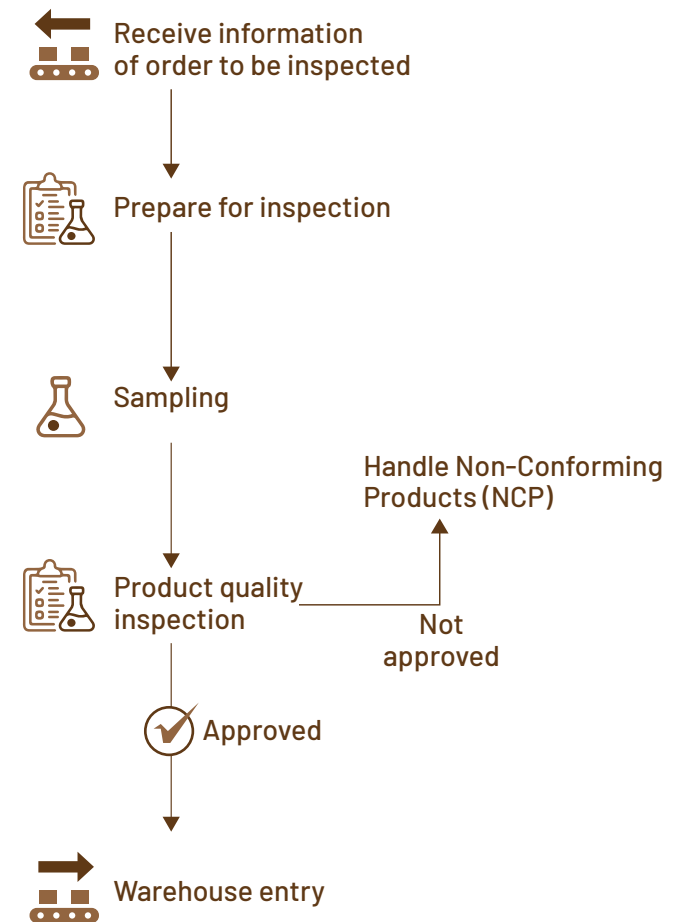
INCOMING RAW MATERIALS INSPECTION PROCESS



IN-PROCESS QUALITY CONTROL (IPQC) PROCESS



WAREHOUSE & PRE-SHIPMENT QUALITY CONTROL



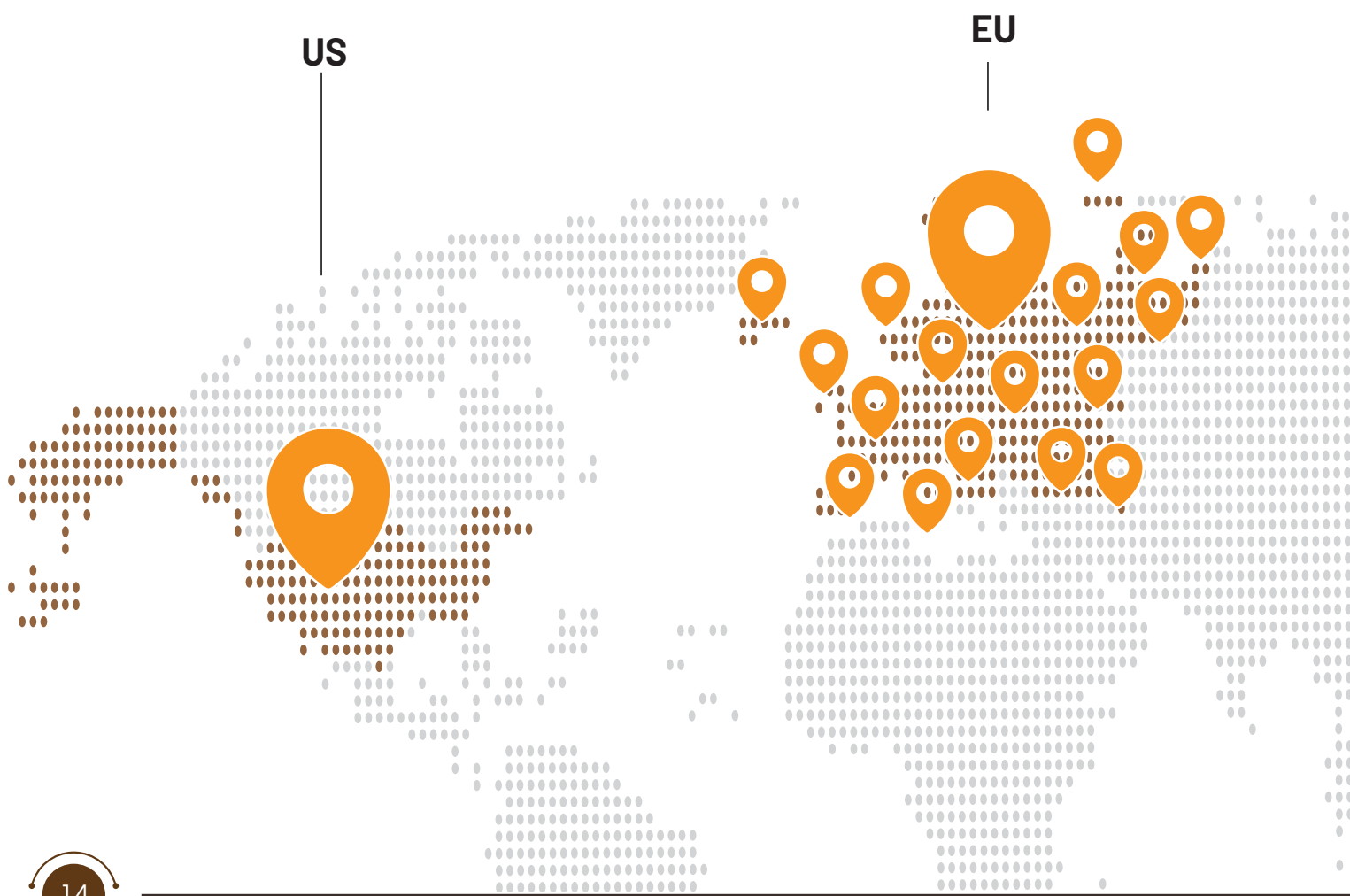


➤ WITH A GLOBAL VISION, A MISSION FOR SUSTAINABLE GROWTH, AND CORE VALUES CENTERED ON PEOPLE – QUALITY – RESPONSIBILITY

Tin An is committed to delivering optimal product solutions to customers around the world.

World-Class Manufacturing Capacity

With strong manufacturing capacity, internationally certified quality, and extensive experience serving multiple customer segments, Tin An is ready to partner with clients worldwide – delivering comprehensive and dependable SPC and WPC flooring solutions that blend performance, aesthetics, and environmental responsibility.



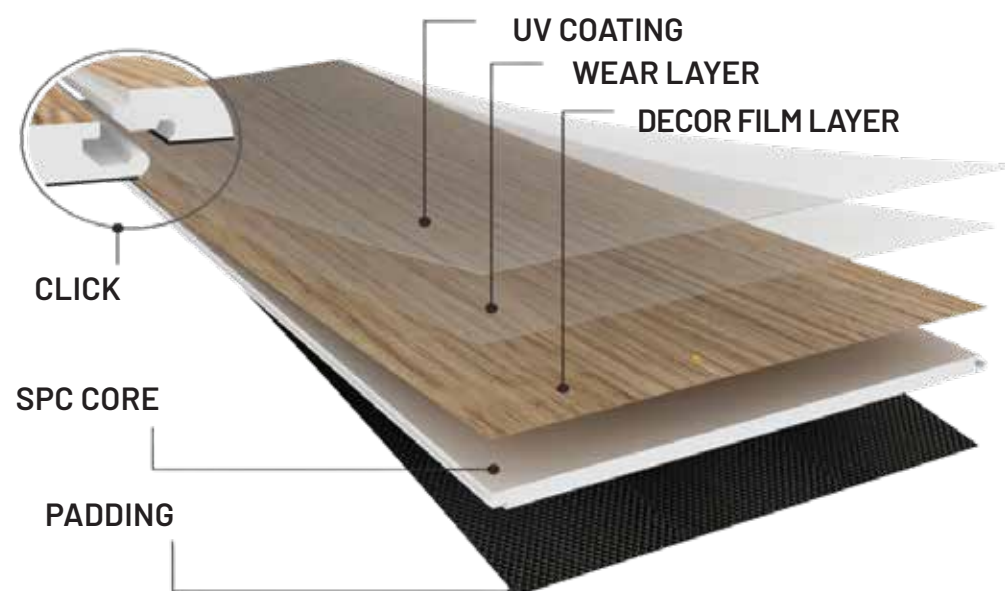


➤ SPC STRUCTURE

Introducing SPC Flooring – The Ultimate Flooring Solution

SPC (Stone Plastic Composite) flooring is the next generation of premium vinyl flooring, manufactured from virgin PVC combined with natural limestone powder. This creates an **ultra-rigid core that is 100% waterproof and exceptionally durable over time.**

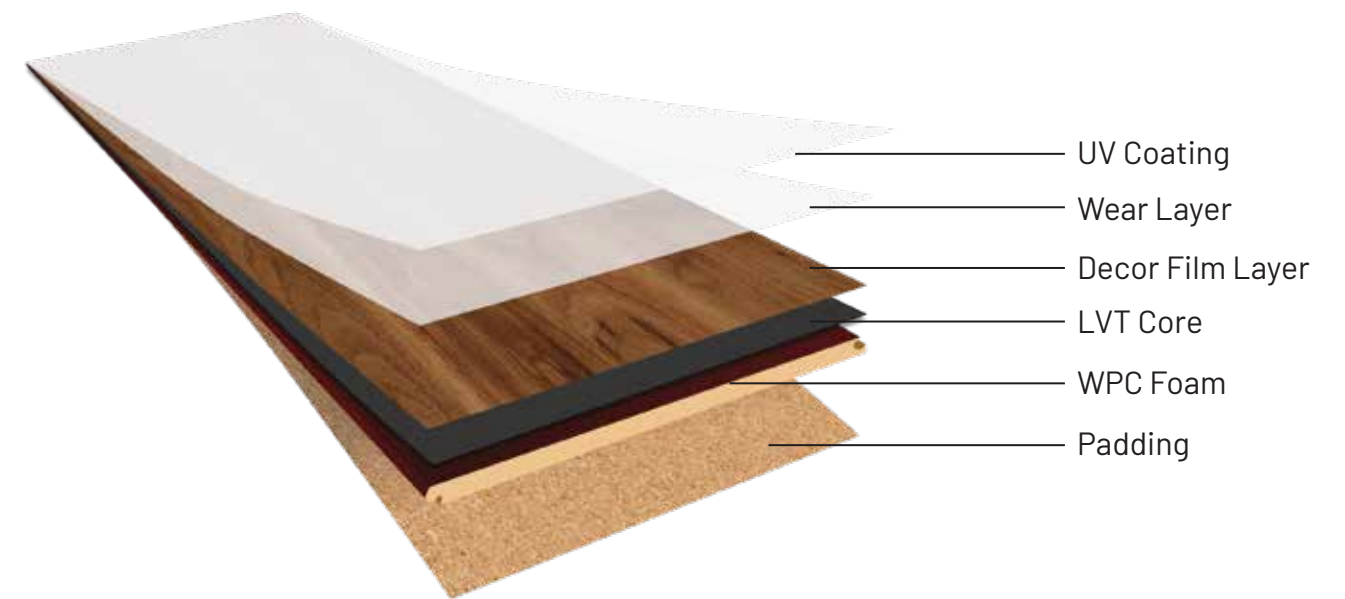
With the perfect balance of technology, aesthetics, and sustainability, SPC flooring is more than just a flooring material – it is a comprehensive solution: durable, health-safe, visually superior, and adaptable to **every living and working space.**



➤ WPC STRUCTURE

Introducing WPC Flooring – The Ultimate Flooring Solution

WPC (Wood Plastic Composite) is a blend of plastic and foaming agents, creating a water-resistant core. It combines the natural look of wood with enhanced durability, offering a premium flooring solution that is sustainable, versatile, and safe for modern living spaces.



Key Advantages:

- Lightweight structure, delivering a softer and more comfortable underfoot experience compared to other flooring types.
- Superior sound absorption, effectively minimizing noise during movement.
- Elegant appearance with the natural look of real wood.
- Outstanding performance benefits of PVC flooring: 100% waterproof, fire-resistant, and easy to install.



SURFACE TECHNOLOGY & STRUCTURE

SPC - SPECIFICATION

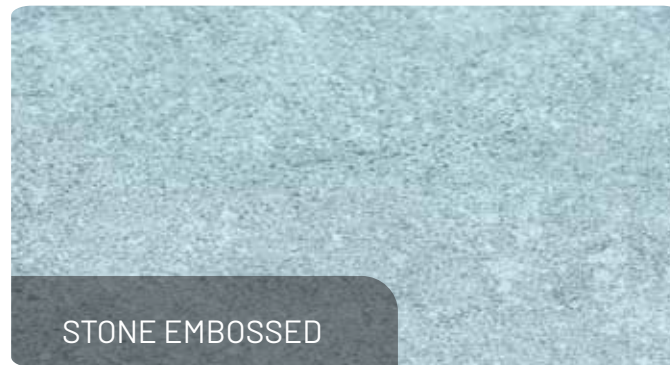
COMPONENT	DETAILS
Overall thickness	3.2-7 mm
Wear layer	0.15-0.7 mm (customizable upon request)
Underlayment	EVA, IXPE, Cork 1.0 mm / 1.5 mm / 2.0 mm (customizable upon request)
Surface treatment	UV coating, Purecoat
Bevel option	Square, Micro bevel, Painted bevel, Pressed bevel
Surface texture	BP, Deep embossed, Stone embossed, EIR
Dimensions	- Width (inches): 6, 7, 9
	- Length (inches): 48, 60, 70
	- Tile sizes: 12×24; 18×36
Locking system	I4F, Valinge

WPC - SPECIFICATION

COMPONENT	DETAILS
Overall thickness	6.5-12mm
Wear layer	0.3-0.7 mm (customizable upon request)
Underlayment	IXPE, Cork 1.0 mm/1.5 mm/2.0 mm (customizable upon request)
Surface treatment	UV coating, Purecoat
Bevel option	Square, Micro bevel, Painted bevel, Pressed bevel
Surface texture	BP, Deep embossed, EIR
Dimensions	- Width (inches): 6, 7, 9
	- Length (inches): 48, 60, 70
	- Tile sizes: 12×24; 18×36
Locking system	I4F, Valinge



SURFACE FINISHING



TYPES OF BEVEL

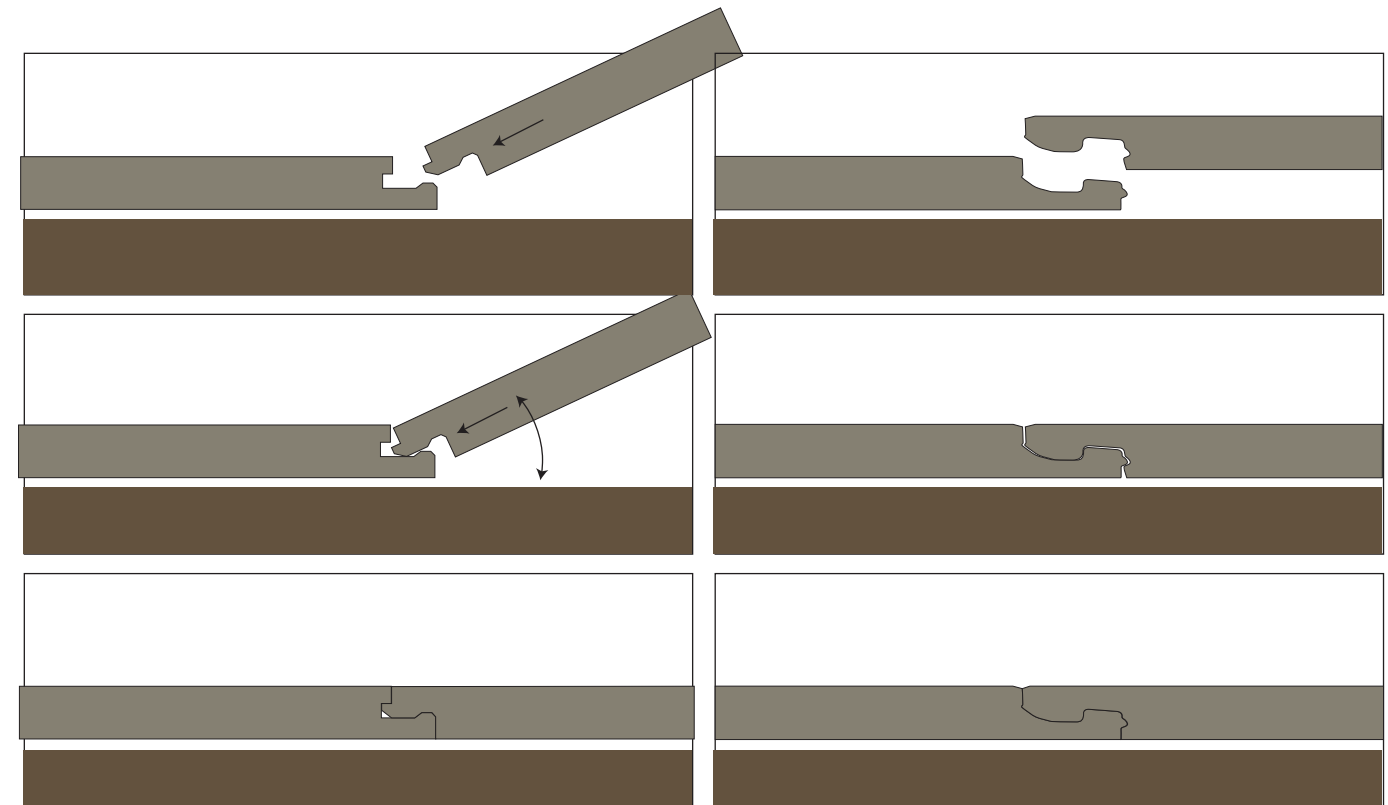


UNDERLAYMENT

Underlayment	IXPE			EVA	CORK
	Density 7.5	Density 10	Density 15		
Thickness					
1.0mm	●	●	●	●	●
1.5mm		●	●	●	●
2.0mm		●	●	●	●
Picture					

LOCKING SYSTEM

Our flooring is equipped with patented locking systems developed by global leaders in flooring technology - Välinge and I4F



CERTIFICATION



No.	Performance	Certification	Method	Test results
1	ISO 9001 & 14001		Approved	Certified
2	CE Marking		Approved	Certified
3	Floorscore		Approved	Certified
4	Greenguard gold		Approved	Certified
5	IAC Gold		Approved	Certified
6	Heavy Metals		ASTM F963	Not Detected
7	RoHS / REACH / SVHC....		ICE 62321-5, ICE 62321-4:2013 +AMD1:2017, ICE 62321-7-1:2015 GC, LC, IC, ICP and UV	Meets
8	Phthalate		CPSC-CH-C1001-09.4	Not Detected
9	Fire Resistance and Smoke Emission		EN 13501-1:2018 EN ISO 11925-2:2010 +AC:2011 Exposure = 15s EN ISO 9239-1:2010	Class Bfl - S1
10	Impact Insulation Class (IIC)		ASTM E989	With Padding and Ceiling: 65
11	Sound Transmission STC/IIC (≥50dB)		ASTM E413	With Padding and Ceiling: 60
12	Formaldehyde		EN 717-1:2004	Class E1

TECHNICAL DATASHEET

No.	Performance	Method	Results	
1	Dimensions	Length	ISO 24337	Meets
		Width	ISO 24337	Meets
2	Overall Thickness	ISO 24337	Meets	
3	Wear Layer Thickness	DIN EN ISO 24340	Meets	
4	MOR (Bending strength)	In house	Meets	
5	MOE (Elasticity Modulus)	In house	Meets	
6	Peeling strength	EN 431	Meets	
7	Dimensional Stability (6h - 80°C)	MD	ISO 23999	Meets
		CD	ISO 23999	Meets
8	Residual indentation	Curling	ISO 23999	Meets
		In house		Meets
9	Surface Scratch	ISO 1518	Meets	
10	Wearlayer abrasion resistance (surface abrasion)	EN 13329 Annex E	Meets	
11	Residual indentation	ISO 24343-1	Meets	
12	Impact Resistance	In house	Meets	
13	Squareness	ISO 24337	Meets	
14	Straightness	ISO 24337	Meets	
15	Flatness	Width direction	ISO 24337	Meets
		Length direction		Meets
16	Opening	ISO 24337	Meets	
17	Ledging (Height difference)	ISO 24337	Meets	
18	Castor chair (round)	ISO 4918	Meets	
19	Micro-scratch Resistance (Scratch-resistant test)	EN16094 Procedure B	Meets	
20	Glossiness Gloss retention	EN16094 Procedure A	Meets	
21	Gloss	Surface gloss 60°	Meets	
22	Profile Projector	In house	Meets	
23	Installation by hand	In house	Meets	
24	Resistance to stains (120 minutes)	Acetone		Meets
		Mustard		Meets
		Iodine	EN 438-2:2016+A1:2018, Section 26 In house	Meets
		Shoe polish		Meets
25	Visual (surface) Defects	Market pen		Meets
		In house		Meets



➤ OUTSTANDING FEATURES



SUPERIOR DURABILITY

Made from 100% virgin SPC materials, ensuring consistent quality and strength.



EFFECTIVE SOUND INSULATION

EVA & IXPE underlays enhance sound absorption for a quieter environment.



MOLD & MILDEW RESISTANT

Moisture-proof SPC prevents mold and mildew growth.



HIGH IMPACT RESISTANCE

Withstands heavy loads up to 200 kg/cm² with density >2,000 kg/m³.



FORMALDEHYDE-FREE

Heat-pressed layers without glue – safe and eco-friendly.



NO WARPING OR SHRINKING

Stable structure prevents deformation caused by temperature or humidity changes.



SCRATCH & SLIP RESISTANCE

Protective wear layer resists scratches, slips, and daily wear.



100% WATERPROOF

CaCO₃ + PVC formula ensures absolute water resistance.



FLAME RETARDANT

Certified fire-retardant flooring for minimized fire risks.

Our latest premium flooring is designed with superior features that completely overcome the limitations of traditional flooring materials.



EASY INSTALLATION

Patented click-lock system for quick, secure, and seamless installation.

▶ HIGHLIGHTED PROJECTS - RESIDENTIAL



▶ HIGHLIGHTED PROJECTS – OFFICE



BUILDINGS



GOLDEN LOTUS HOTEL



SERENE HOTEL



FLORA BEACH HOTEL & SPA



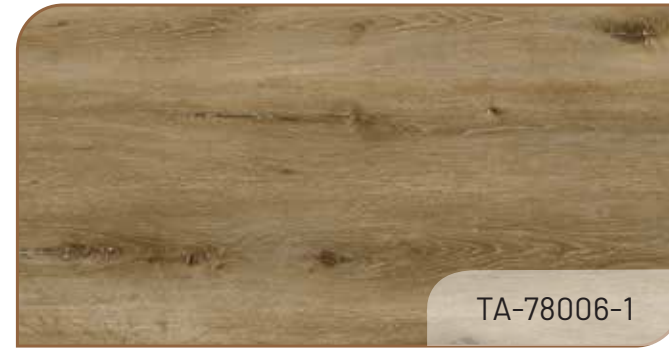
S-MERCIFUL PALACE



TA-77022-1



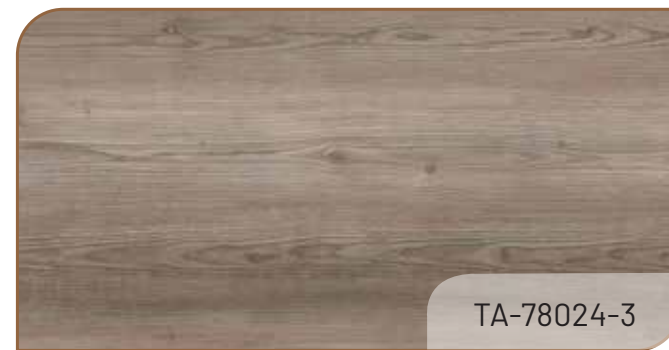
TA-77027-1



TA-78006-1



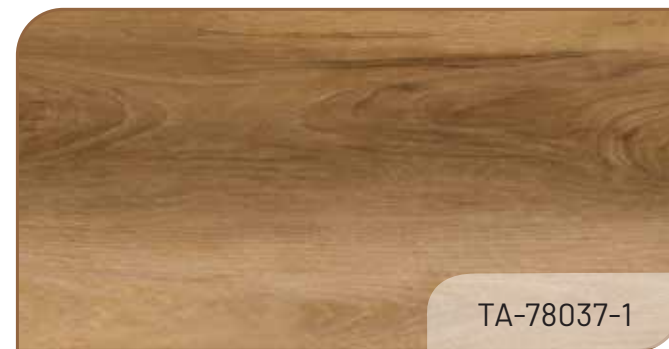
TA-78015-1



TA-78024-3



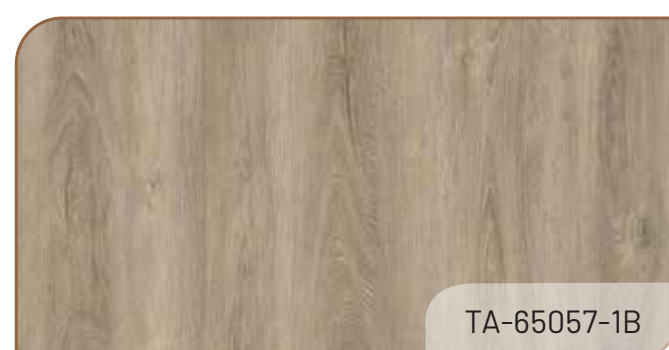
TA-78034-1



TA-78037-1

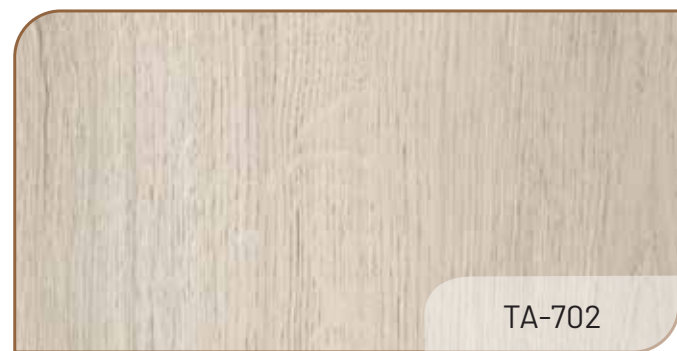


TA-78040-1

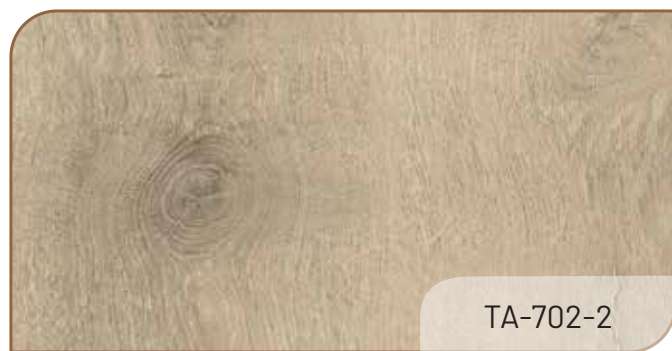


TA-65057-1B

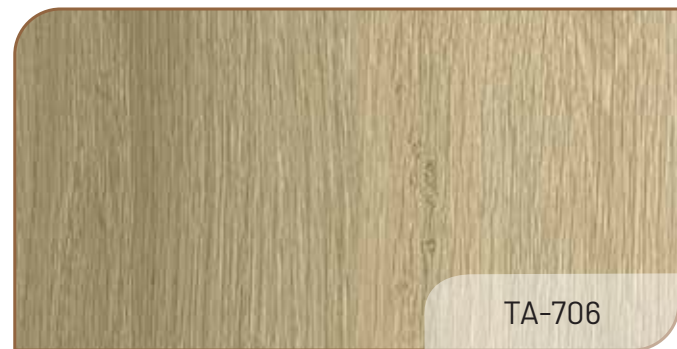
➤ COLLECTION FOR REFERENCE



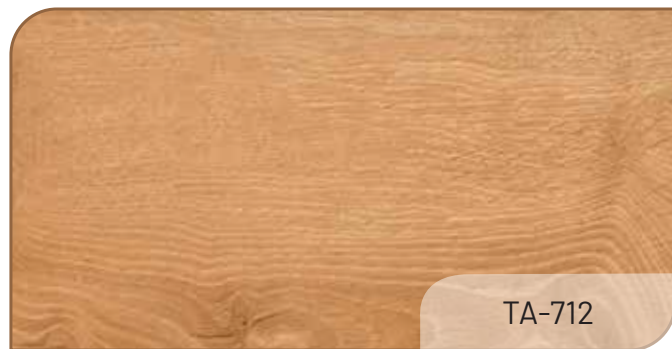
TA-702



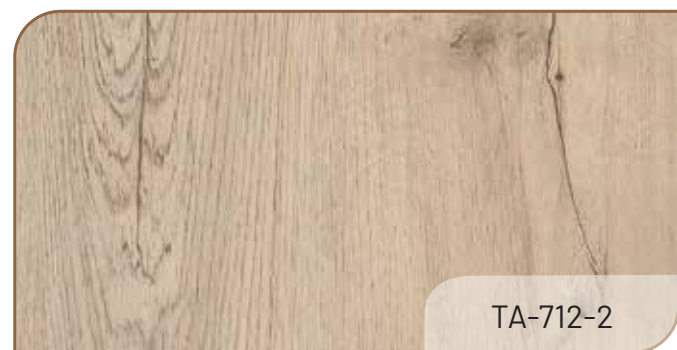
TA-702-2



TA-706



TA-712



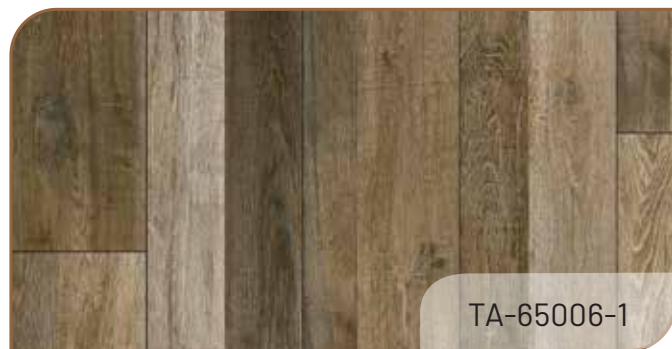
TA-712-2



TA-712-3



TA-65002-3

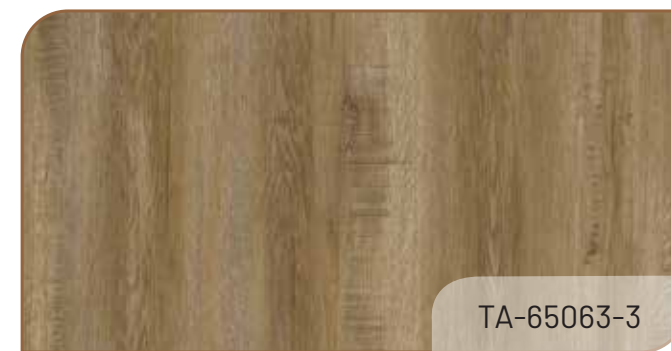


TA-65006-1



TA-65024-6

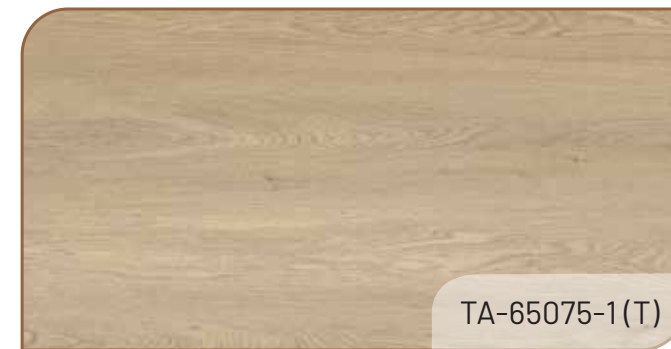
➤ COLLECTION FOR REFERENCE



TA-65063-3



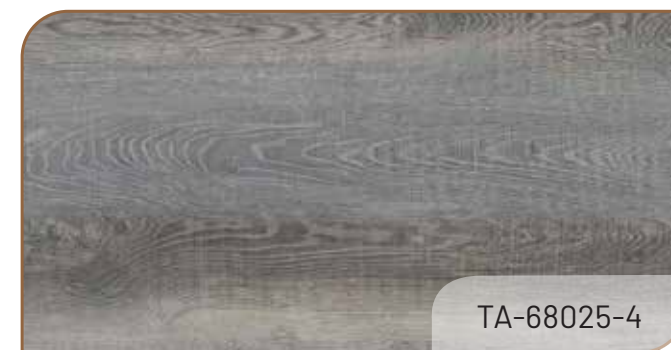
TA-65064-2



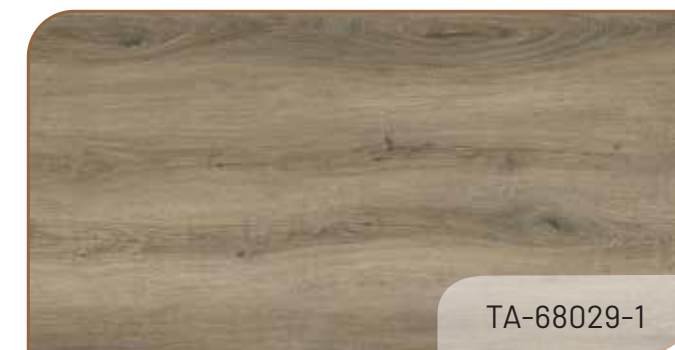
TA-65075-1(T)



TA-68012-4



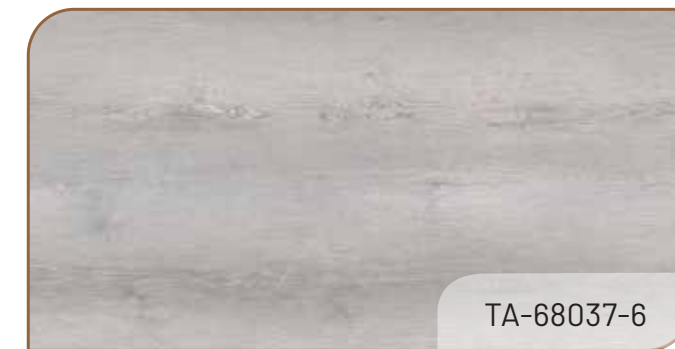
TA-68025-4



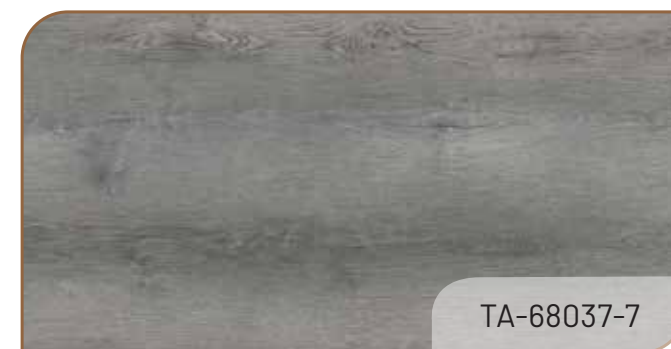
TA-68029-1



TA-68030-1

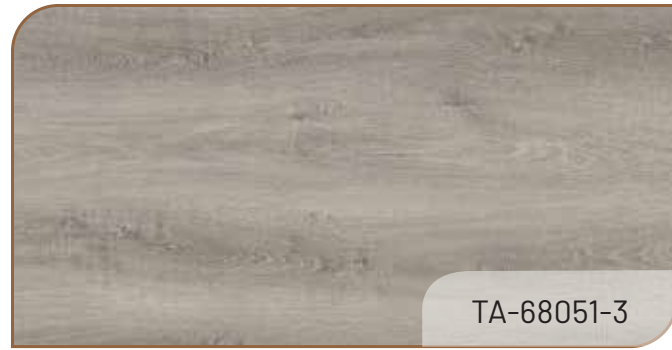


TA-68037-6



TA-68037-7

▶ **COLLECTION FOR REFERENCE**



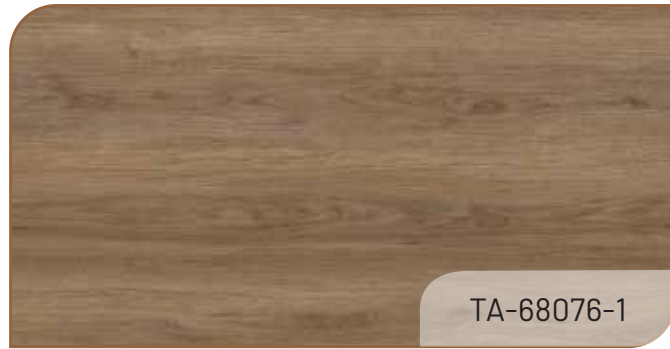
TA-68051-3



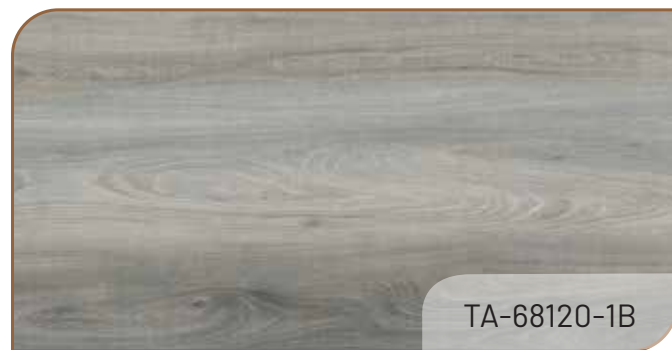
TA-68055-4



TA-68069-3



TA-68076-1



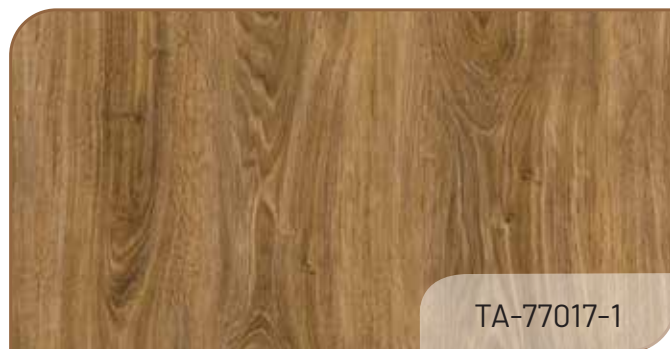
TA-68120-1B



TA-68120-2A



TA-65064-3



TA-77017-1



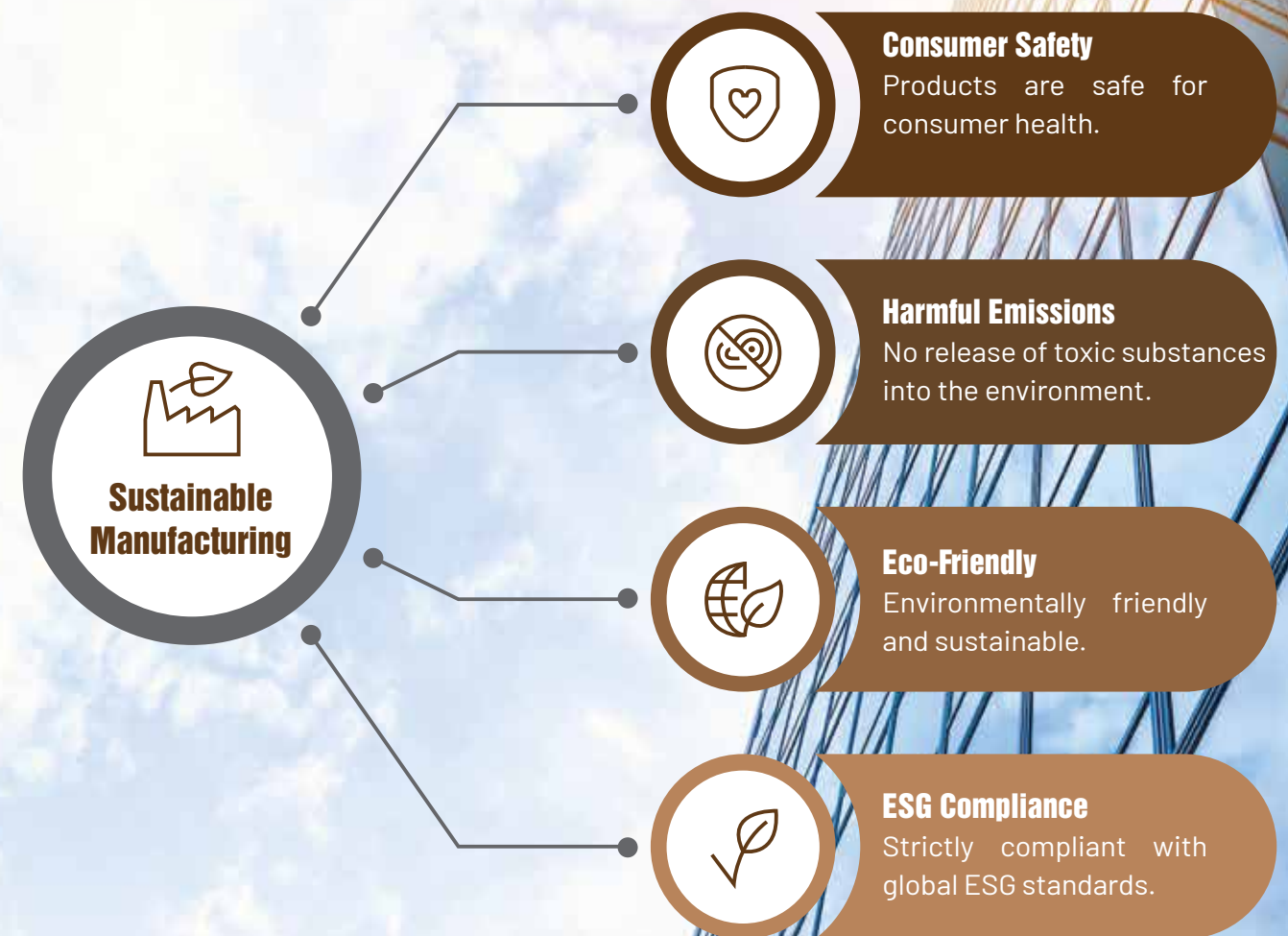
TA-68050-1

▶ **OUR COMMITMENT**

Tin An's manufacturing technology is developed with a strong commitment to consumer health, ensuring no harmful emissions and maintaining eco-friendliness.

We take pride in our global supply network and strategic partnerships with trusted partners in the U.S., Japan, Taiwan, Korea, China, .etc.. This enables us to secure stable raw material sources and enforce strict quality control – the foundation of dense, durable, and environmentally safe SPC and WPC flooring.

With the vision of becoming one of Vietnam's leading SPC and WPC flooring manufacturers, Tin An is committed to continuous innovation, uncompromising quality, and delivering optimal flooring solutions for modern living spaces and projects.





TIN AN INVESTMENT PRODUCTION TRADING JOINT STOCK COMPANY

Tax code: 3702471157

Address: Lot B1, D3 Street, Dong An 2 Industrial Park, Binh Duong Ward, Ho Chi Minh City



Website: tinanjsc.com

Hotline: +84948 70 83 38

Email: info@tinanjsc.com

WhatsApp/Viber/Wechat: +84948 70 83 38